

**FISHER ISLAND DAY SCHOOL
2020-2021 COVID-19 RE-OPENING PLAN**



Developing the Mind, Body, & Spirit

**Fisher Island Day School
Two Fisher Island Drive
Miami Beach, Florida 33109
305.531.2350 (Office) • 305.531.2349 (Fax)**

www.FIDS.org

UPDATED DECEMBER 7, 2020

**MS. JANA NEFF, PRESIDENT & BOARD CHAIR • DR. LORNA ESCOFFERY, VICE PRESIDENT & SECRETARY
MR. BRIAN NEFF, TREASURER • MR. JAMES L. FERRARO • MS. VERA HIRSH
MR. DONALD S. MACKENZIE • MS. LAURIE MELNICK • MS. KATHERINE PARSONS**



Dear FIDS Community,

It was with great excitement and optimism that Fisher Island Day School (FIDS) reopened its facility for the 2020-2021 school year on Monday, August 24, 2020. Our reopening plans have been consistent with the recent recommendation by the [American Academy of Pediatrics](#), who advised that students be “physically present in school” as much as possible and emphasize that there are major health, social, and educational risks to keeping children at home. In preparing for FIDS’s re-opening, we have followed the precepts of Florida’s [Re-Opening Florida’s Schools and the CARES Act](#), which supports school-level plans that “maintain in-person learning, the best mode of education delivery for high student achievement.”

Being a small school with low student-teacher ratios, we pride ourselves on being able to quickly adapt to changing situations while providing the best possible overall learning experience for our students. Unlike our larger school counterparts—who are wrestling with capacity constraints—we can safely accommodate our entire student body within our campus. In the best interest of our children, we look forward to having everyone back on campus in August.

The development of our re-opening plan considered the needs of faculty, staff members, and—most importantly—our students. When considering the typical school day, there are several high-risk occasions where students and faculty/staff gather in close proximity—including arrivals, departures, all-school assemblies, lunchtime, and group-based extracurricular activities. Within the context of pandemic recovery, it is essential to carefully manage these situations, including strictly controlling in-class activities and student movement and limiting assembly-type gatherings in order to reduce the likelihood of spreading an infectious disease.

All of our efforts and plans will follow federal, state, and local laws and regulations as a legal basis for resuming school operations and associated educational activities. Furthermore, we expect this to be an evolving plan as we learn more about COVID-19 and how to reduce its spread. This plan will involve helping educate our employees, students, and family members on how to safely operate in this environment. It will also include adopting personal protective equipment policies—in alignment with CDC guidelines—for protecting staff members, teachers, and students. Whereas we expect our policies and procedures to evolve, we remain convinced that strict adherence to a few simple basics will produce the best outcomes for everyone. These steps include:

1. Pay close attention to social distancing guidelines.
2. Wash hands and apply hand sanitizer frequently.
3. Minimize touching, hugging, or any close personal contact.
4. Wear a mask if unable to maintain proper social distancing indoors.
5. Stay/go home if you are ill or if your temperature exceeds normal ranges.
6. Refrain from gathering in large groups/assemblies.

The information contained in this document is current as of July 3, 2020, and is based on the best information available at this time. Updates and changes will be communicated throughout the summer.

Stay safe,
Michael Bell
Head of School

Table of Contents

I. On-Campus/In-Person Instruction Overarching Key Health and Wellness Protocols4

II. Virtual Learning4

III. Alternative Instruction5

IV. Students, Staff, and Families with Medical Vulnerabilities.....5

V. General Mitigation Strategies: Students, Parents, and Staff.....5

VI. Face Coverings6

VII. Bus Transportation6

VIII. General Arrival Procedures.....6

IX. Student Arrival Procedures7

X. Student Dismissal Procedures (Regular School Hours)7

XI. Student Dismissal Procedures (After School Hours).....7

XII. Social Distancing7

XIII. Foodservice8

XIV. Cleaning9

XV. Protocols for Responding to a Confirmed COVID-19 Case9

XVI. COVID-19 Pledge and Acknowledgement of Risk/Mutual Indemnification10

I. On-Campus/In-Person Instruction: Overarching Key Health and Wellness Protocols

Fisher Island Day School (FIDS) plans to resume on-campus, in-person teaching and learning for the 2020-2021 school year beginning August 24, 2020. The School will adhere to the guidelines and recommendations from the Center for Disease Control (CDC), the Florida Department of Education, and any applicable local mandates. The procedures set forth in this plan are reviewed periodically by FIDS's administration to ensure that our efforts meet the academic and health well-being of the entire school community.

- Students attend school daily for face-to-face instruction with teachers
- Parents sign pledge and acknowledgement of risk/mutual indemnification (see pages 10-11).
- Social distancing enforced
- Non-traditional spaces repurposed for instruction to maximize safety and social distancing
- Cohort model (i.e., students are self-contained) used whenever possible to limit student movement. The cohort model limits student movement on campus by having related arts teachers deliver instruction in each student's homeroom classroom as opposed to the students changing classrooms for elective courses.
- Large assemblies replaced with virtual meeting venues
- Limit number of visitors on campus
- Limitation of personal items on campus
- Suspension of field trips when social distancing is not possible
- Masks or face shields provided for all employees
- Daily health and temperature screenings
- COVID-19-trained nurse on campus during school hours
- Hand sanitizing stations throughout facility
- "High touch surfaces" (e.g., door knobs, etc.) sanitized every two hours
- Classrooms cleaned and disinfected nightly by a COVID-19-trained sanitization crew
- Restrooms cleaned on a two-hour rotation
- Hospital grade HVAC air filtration using UV lighting, including fresh air intake

II. Virtual Learning: Fisher Island Day School will move to its highly-regarded Virtual Learning platform if directed by the Governor or recommended by the CDC or the Florida Department of Health.

There may be scenarios that call for one class, a school division (primary, lower, or middle), or the entire school to move to Virtual Learning on a temporary basis. Depending on the scenario, FIDS's facility may be closed partially or in its entirety.

Virtual Learning is designed to provide an educational alternative to in-person instruction if it is not safe to open the Fisher Island Day School campus. When Virtual Learning is deployed, it will generally involve the entire school community. During a Virtual Learning period, all teachers are devoted to providing instruction virtually. If required, Virtual Learning 2020-2021 will include:

- structured schedule for students with set start and finish times;
- increased opportunities for live instruction across Primary School; and
- optional participation in related-arts classes as determined by individual families.

III. Alternative Instruction

Fisher Island Day School is committed to working with families who do not yet feel comfortable commencing On-Campus/In-Person Instruction by offering our Alternative Instruction model. In FIDS's Alternative Instruction model, core-content learning packets (including practice exercises, assignments, readings, and assessments) are sent home via email at the beginning of each week. Throughout the week, your child's teacher will schedule regular virtual check-ins with him/her to provide assistance and assess progress. FIDS's Alternative Instruction provides opportunities for students to listen-in on classroom instruction in a non-interactive format. Alternative Instruction can be used by families desiring a little more time at home prior to returning to On-Campus/In-Person Instruction. Parents interested in the Alternative Instruction model should contact Mrs. Mollie Small, Assistant Head of School, at msmall@fids.org.

IV. Students, Staff and Families with Medical Vulnerabilities

- Students with underlying health issues should develop a plan for returning to school with their family doctor.
- Staff with underlying health issues should work with their doctors to create a return to work plan. Whenever feasible, steps should be taken to minimize the number of people they interact with on a regular basis.
- The same guidelines apply for students and staff who live with family members with underlying health issues (e.g., parents, grandparents).

V. General Mitigation Strategies: Students, Parents and Staff

Individuals are encouraged to practice good hygiene and engage in healthy activities, including outdoor activities, while practicing social distancing. The following general guidelines are recommended for all individuals:

- Practice social distancing, whenever feasible.
- Frequently wash hands with soap and water for at least 20 seconds or use hand sanitizer if soap and water are not available.
- Avoid touching eyes, nose, and mouth.
- Cover your cough or sneeze with your elbow or a tissue and dispose of the tissue.
- Clean and disinfect frequently touched items and surfaces as much as possible, inclusive of high-touch and high-traffic areas. To that end, hand sanitizer, disinfecting wipes, soap and water, or similar disinfectants are readily available to employees, students, and visitors.
- Monitor your symptoms carefully. Note that the CDC reports children are more frequently asymptomatic and "may not initially present with fever and cough as often as adult patients."
- Stay home if you are sick or if you believe you have been exposed to COVID-19.
- If you believe you are infected with COVID-19, contact your health-care provider immediately.
- Self-report all travels and self-quarantine for at least 14 days upon your return, if such quarantine is required by the government.
- Symptomatic people are not allowed to return until they are cleared by a medical provider.
- Follow all Federal, State, and Local orders pertaining to public health.
- If you are older than 65 years of age or have a serious underlying medical condition, avoid large crowds.

On August 21, 2020, the CDC revised its travel procedures and dropped the strict travel guidance that persons returning from out of country or cruise ship travel self-isolate for 14 days. Read the updated guidance by clicking [here](#).

VI. Face Coverings

Depending on local regulations, students may be required to wear face coverings at specified times during the school year or for designated periods during the school day—e.g., when social distancing is not possible while riding the school bus. FIDS will comply with all government regulations concerning face coverings; however, we do not advocate that children wear them when outdoors, especially on warm days or when exercising. That said, we will respect the wishes of parents who want their children to wear face coverings, even when they are not required by law. To that end, we recommend that parents purchase washable neck gaiters (preferred) or face masks for their children.

FIDS will provide each child with one washable neck gaiter upon enrollment. Additional neck gaiters will be available for purchase at FIDS; logoed masks are available through Lands' End. In addition, FIDS will keep a supply of disposable face masks on hand for use during emergencies. We respect the right of parents to select face coverings that best meet the safety needs of their children. Non-FIDS-logoed face coverings should be free of other logos, emblems, and/or text and should coordinate with school uniform colors.

VII. Bus Transportation

Inasmuch as social distancing may not always be maintained when onboard the school bus, students will be required to wear face coverings on the school bus. In addition, whenever possible students from the same family will be seated together on the bus. Parents who are uncomfortable with having their child ride the school bus may purchase a ferry decal.

VIII. General Arrival Procedures

All faculty members, students, parents and visitors to the campus will be required to abide by the following measures prior to entering the building:

1. All adults will be required to wear a face-mask upon entry and whenever possible, especially indoors if unable to maintain proper social distancing (~6'). Face masks are optional for students. They should not be used when outdoors, for students under the age of 2, by anyone who has trouble breathing, or by anyone who is unable to remove the mask without assistance.
2. Daily health screenings (i.e., temperature check via a touch-less thermometer). Anyone with an elevated temperature will have their temperature checked with a traditional thermometer. If temperature remains high, the individual will be sent home.
3. Hand sanitization via hand sanitizer or traditional hand-washing if available.
4. The front door and side gate to the school will remain locked. Anyone requesting entry will be asked to call the main school line (305-531-2350). Signage is posted on the front door and side gate to remind visitors of the protocols.

IX. Student Arrival Procedures

In addition to the procedures outlined above:

1. Students will be directed to their classroom where they will be required to wash their hands with soap and water.
2. In an effort to minimize the number of visitors within the campus, staff members will be available to help escort students to their classrooms. Parents may be requested to remain outside.
3. Selected cohorts of students will utilize the side gate in the southeast corner of the school as a means of entry to support social distancing.
4. Following the completion of student arrival, on or about 8:15 a.m., the front door and side gate to the school will be locked. Anyone requesting entry will be asked to call the main school line (305-531-2350).

X. Student Dismissal Procedures (Regular School Hours)

1. Parents and/or caregivers are to wait outside the school at the conclusion of the school day. Select faculty members will radio and/or call classrooms to dismiss students from their classrooms.
2. Students with permission to walk home will be dismissed via the side gate on the southeast corner of the school.
3. Bus riders will be called in small groups to board the bus.
4. Following the completion of student dismissal for regular school hours, on or about 3:15 p.m., the front door and side gate to the school will be locked. Anyone requesting entry will be asked to call the main school line (305-531-2350).

XI. Student Dismissal Procedures (After School Hours)

1. Parents and/or caregivers are to wait outside the school at the conclusion of the school day. Select faculty members will radio and/or call classrooms to dismiss students from their classrooms.
2. Students with permission to walk home will be dismissed via the side gate on the southeast corner of the school.
3. Bus riders will be called in small groups to board the bus.
4. Following the completion of student dismissal for regular school hours, on or about 4:15 p.m., the front door and side gate to the school will be locked. Anyone requesting entry will be asked to call the main school line (305-531-2350).

XII. Social Distancing

Fisher Island Day School follows the guidelines as set forth by the Center for Disease Control (CDC), the Florida Department of Education, as well as state and local officials.

As outlined by the CDC, limiting face-to-face contact with others is the best way to reduce the spread of coronavirus (COVID-19). To the extent possible, adults are to remain a minimum of 6 feet away from others. FIDS is taking the following precautions to support social distancing:

1. Selected grade level classrooms may be relocated based on student enrollment. Grade levels with large enrollments will utilize the larger classrooms. Additionally, shared spaces such as the library, art studio, and outdoor space may be used for instructional purposes.
2. As feasible, grade level classes will be asked to travel in their respective cohorts throughout the day to minimize the number of people in close contact with each person.
3. Nonessential furniture and equipment may be moved out of the classrooms to increase distance between students.
4. As feasible, maintain a maximum distance between desks as possible, even if not able to achieve 6 feet, and avoid sharing of textbooks, supplies and toys.
5. Related arts teachers (except for physical education) will rotate between the classrooms at their scheduled times, rather than students traveling to these locations. Teachers will limit the sharing of student materials and/or equipment.
6. Courtyard Dining: All tables in the courtyard have maximum occupancy signage that indicates the total number of people allowable at each table at one time. Individual bottles of hand sanitizer have been placed at each table. All tables will be sanitized after each use. Students will have the opportunity to dine “picnic style” in the shade on the playground on a set rotating schedule throughout the week.
7. Playground usage is limited to one class at a time based on an assigned schedule. The playground is sanitized following each use.
8. Teleconferencing: If possible, staff should consider phone calls or videoconferencing as alternatives to face-to-face parent-teacher conferences. If a face-to-face meeting is required, those present should sit six feet apart from one another.
9. Nonessential visitors will be provided with limited access to campus.
10. Nonessential mass gatherings will be limited or reschedule as virtual gatherings.
11. See section on “Bus Transportation” for details regarding bus service.

XIII. Foodservice

The healthy quality of our foodservice program will remain the same; however, CDC-recommended changes have been made to the operation of the foodservice program, including:

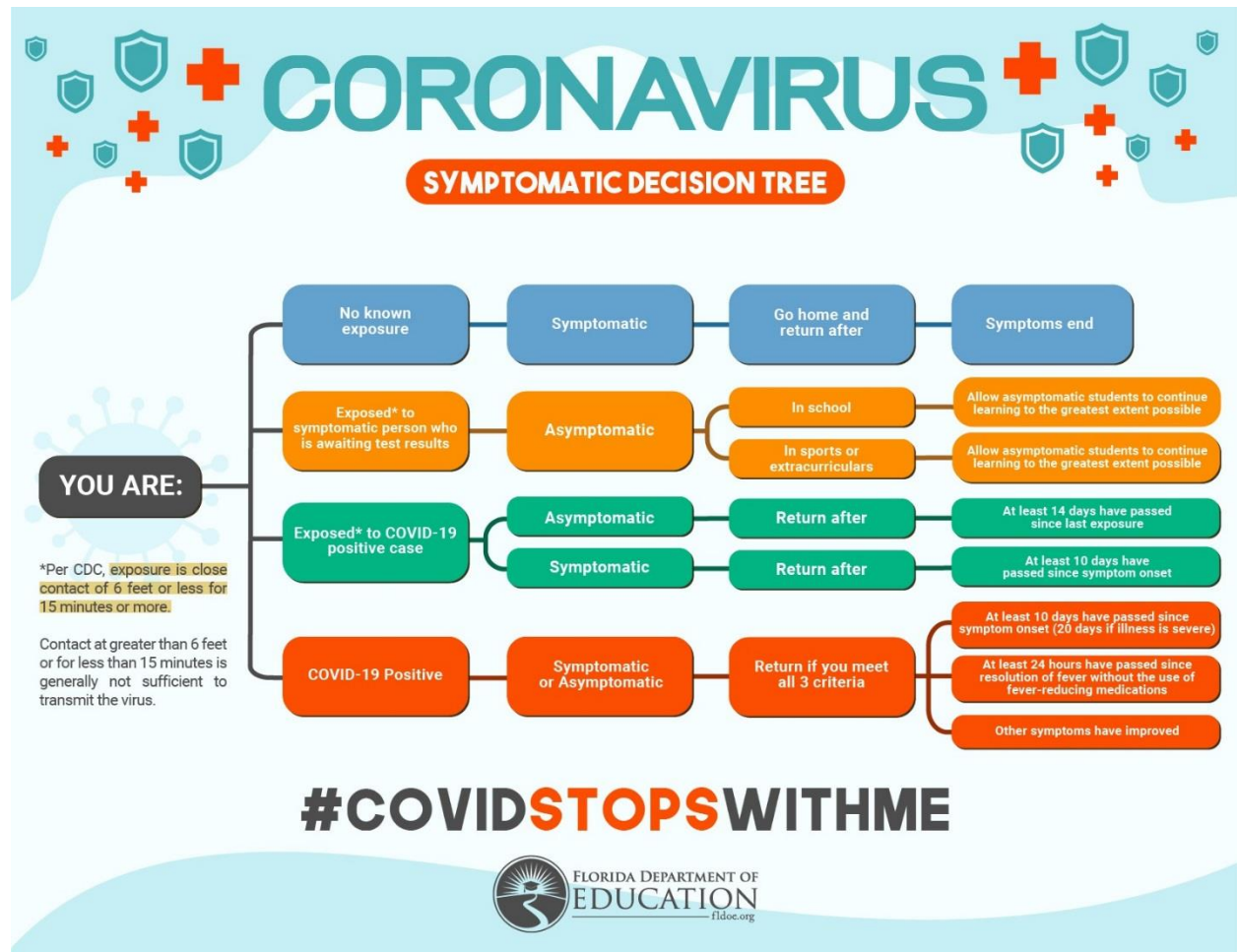
- Pre-made “grab-and-go” boxed lunches and snacks instead of buffet or family-style service.
- No beverage pitchers or large dispensers.
- Everything is packaged for single-use in disposable containers, inclusive of beverages and condiments.
- Student lunch times will be staggered with fewer diners at each seating.
- Alternative dining spaces will be provided on a rotating basis and may include in-classroom dining or picnic-style dining in shaded areas.

XIV. Cleaning

- All maintenance, housekeeping, and ancillary cleaning staff have been trained using the guidelines issued by the Centers for Disease Control and Prevention,
- Cleaning supplies: FIDS only uses cleaning supplies that conform to CDC guidelines (e.g., EPA-registered disinfectants).
- Housekeeping staff regularly clean and disinfect all surfaces within the school each day.
- Deep cleaning occurs nightly through a third-party cleaning company.
- Equipment Sharing: Staff and students are encouraged to avoid sharing equipment such as telephones, mobile devices, computers, desk accessories, etc. Shared items are to be cleaned between each use.

XV. Protocols for Responding to a Confirmed COVID-19 Case

FIDS’s staff will follow the guidelines set forth by federal, state, and local authorities regarding the school’s response to a confirmed case of COVID-19 by a member of the school community. As additional information about COVID-19 has been made available, many prior regulations issued by the CDC have been relaxed. Please click [here](#) for the latest CDC guidelines on quarantining. Please be reminded that confidentiality will be upheld in such instances.



PLEDGE

Novel coronavirus (“COVID-19”) infections have been confirmed throughout the United States, including in the State of Florida. In accordance with most recent guidance and protocols issued by the Center for Disease Control and Prevention (“CDC”) and the Florida Department of Health (“FDH”), for slowing the transmission of COVID-19, Fisher Island Day School (“School”) has taken steps to implement recommended guidance and protocols issued by the Public Health Agencies for slowing the transmission of COVID-19, including, without limitation, implementation of the access/use recommendations set forth below. The UNDERSIGNED on behalf of himself or herself and such participating children and any personal representatives, heirs, or next of kin (hereinafter referred to as the “Undersigned”) hereby acknowledges and agrees that this **COVID-19 PLEDGE AND ACKNOWLEDGEMENT OF RISK/MUTUAL INDEMNIFICATION** entered between the School and Undersigned and has agreed to the following recommendations:

- 1) To check—prior to and upon returning from traveling—the CDC TRAVEL HEALTH NOTICES list (<https://www.cdc.gov/coronavirus/2019-ncov/travelers/index.html>), prior to utilizing or accessing the School’s facilities, services, and programs.
- 2) You may have been exposed to COVID-19 on your travels. You may feel well and not have any symptoms, but you can be contagious without symptoms and spread the virus to others. You and your travel companions (including children) pose a risk to your family, friends, and community for 14 days after you were exposed to the virus. Regardless of where you traveled or what you did during your trip, take these actions to protect others from getting sick after you return:
 - When around others, stay at least 6 feet (about 2 arms’ length) from other people who are not from your household. It is important to do this everywhere, both indoors and outdoors.
 - Wear a mask to keep your nose and mouth covered when you are outside of your home.
 - Wash your hands often or use hand sanitizer (with at least 60% alcohol).
 - Watch your health and look for symptoms of COVID-19. Take your temperature if you feel sick.
- 3) Follow state, territorial, tribal and local recommendations or requirements after travel. Certain travel—deemed risky by the CDC—may require that you quarantine for a minimum of 14 days.
- 4) If required, engage in necessary quarantining—or obtain negative results on a COVID-19 test—prior to utilizing or accessing the facilities, services, and programs of the School to the extent that he or she engages in travel deemed risky by the CDC.
- 5) To refrain from visiting or utilizing the facilities, services, and programs of the School, and to prevent any participating children from visiting or utilizing the facilities, services, and programs of the School if he or she:
 - a) experiences any symptoms associated with COVID-19, including, without limitation, fever, cough, or chest congestion;
 - b) suspects that he or she has been exposed to COVID-19 within the last 14 days;
 - c) is diagnosed or confirmed with a case of COVID-19 and it has been fewer than 10 days since initial symptoms or less than 72 hours since symptoms completely abated; or
 - d) experiences any symptoms of contagious illnesses.
- 6) To notify the School immediately if he or she believes that any of the foregoing access/use restrictions may apply.
- 7) To abide by all School directives regarding hygiene, social distancing, daily temperature checks, limits of visitors on campus, and limits of personal items on campus.

ACKNOWLEDGEMENT OF RISK/MUTUAL INDEMNIFICATION

Notwithstanding all precautionary measures, Fisher Island Day School (FIDS) and its entire school community (parents, students, employees, contractors, etc.) mutually acknowledge the contagious nature of COVID-19 and voluntarily assume the risk that they may be exposed to or infected by COVID-19 by being on the premises of Fisher Island Day School, Fisher Island, or through interaction required as a means of the two parties engaging with each other.

The parties further acknowledge that such exposure or infection may result in personal injury or illness. The parties understand that the risk of becoming exposed to or infected by COVID-19 at FIDS may result from the actions or omissions of the parties and others, including, but not limited to, FIDS’s Employees, as well as FIDS’s contractors, and students and their families. The parties voluntarily agree to assume all of the foregoing risks and accept sole respective responsibility for any injury, illness, damage, loss, claim, liability, or expense of any kind that the parties may experience or incur in connection with the actions of doing business with each other.

The parties, on behalf of their representatives, hereby mutually release, covenant not to sue, discharge, and hold harmless FIDS and its Employee/Contractor, agents, and representatives, from all liabilities, claims, actions, damages, costs or expenses of any kind arising out of or relating thereto. The parties further understand and agree that this release includes any claims based on the actions, omissions, or negligence of the parties, their employees, agents, and representatives, whether a COVID-19 infection occurs before, during, or after participation in any joint venture by the parties.

I HAVE CAREFULLY READ AND VOLUNTARILY SIGN THIS ***COVID-19 PLEDGE AND ACKNOWLEDGEMENT OF RISK/MUTUAL INDEMNIFICATION***

Name of Child 1: _____
Please Print Above

Name of Child 2: _____
Please Print Above

Name of Child 3: _____
Please Print Above

Name of Child4: _____
Please Print Above

Name of Parent: _____
Please Print Above

Signature of Parent: _____
Sign Above

Date Signed: _____